

OFFICE SPACES FOR LEASE



**GOLDSCHMIDT
& ASSOCIATES**

Commercial Real Estate Group



1941 Palmer Avenue
One West Avenue
Two East Avenue
Larchmont, New York

Property Features

- » 405, 592, 1,300, 1,553 RSF Spaces Available
- » Elevator Building
- » Windowed
- » Separate Electric & HVAC
- » On Site and Street Parking
- » Short Walk to Metro North Train
- » 24/7 Access
- » Close to Exit 16 off I95
- » Close to Banks, Restaurants, Shopping
- » Immediate Occupancy

Asking Rent: \$32- \$35 per SF

CONTACT

Exclusive Agent:

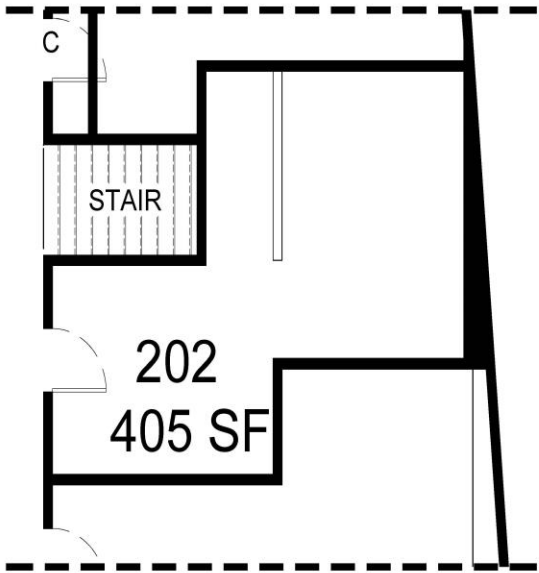
Eric S. Goldschmidt

Phone: 914-723-1616

Email: eric@ga-re.com

All information furnished regarding property for sale, rental or financing is from sources deemed reliable; but no warranty or representation is made to the accuracy thereof and same is submitted subject to errors, omissions, changes of price, rental or other conditions prior sales, lease or withdrawal without notice.

1941 Palmer Avenue Larchmont, NY



SUITE: 202

1 WEST / 2 EAST AVENUE
LARCHMONT

SCALE: $\frac{3}{8}$ " = 1'

DATE: 05.28.2019 REV:00

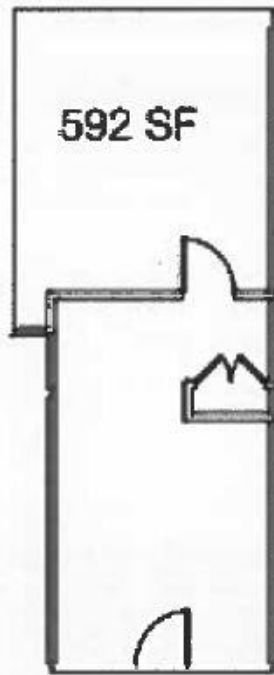
DRAWN BY: M.A.D.

A
2.02

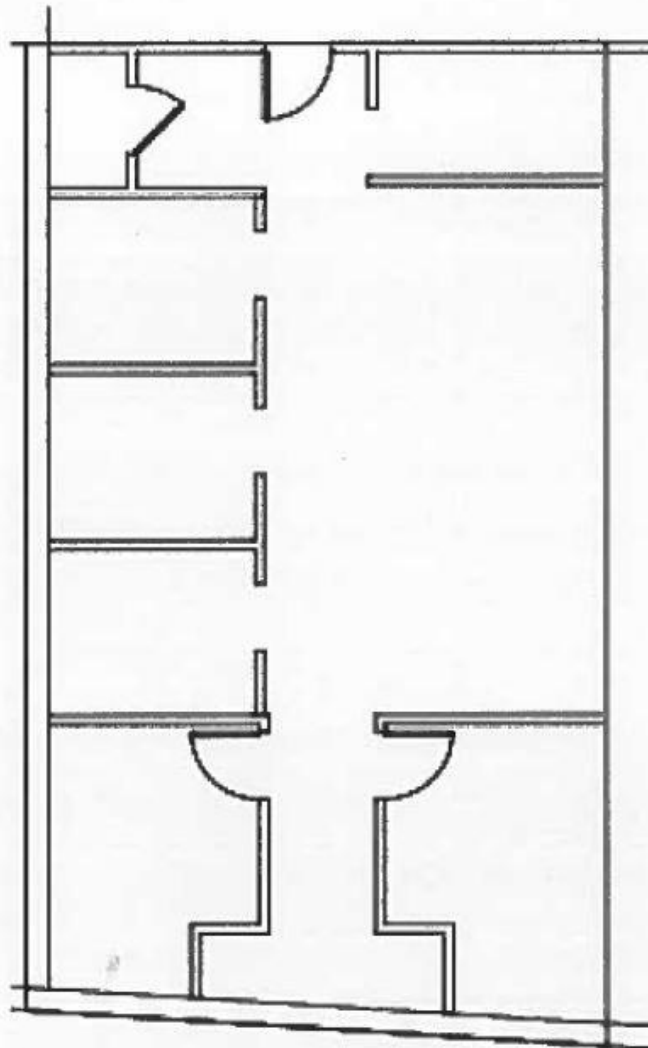
1941 Palmer Avenue Larchmont, NY

SUITE 207

592 SF

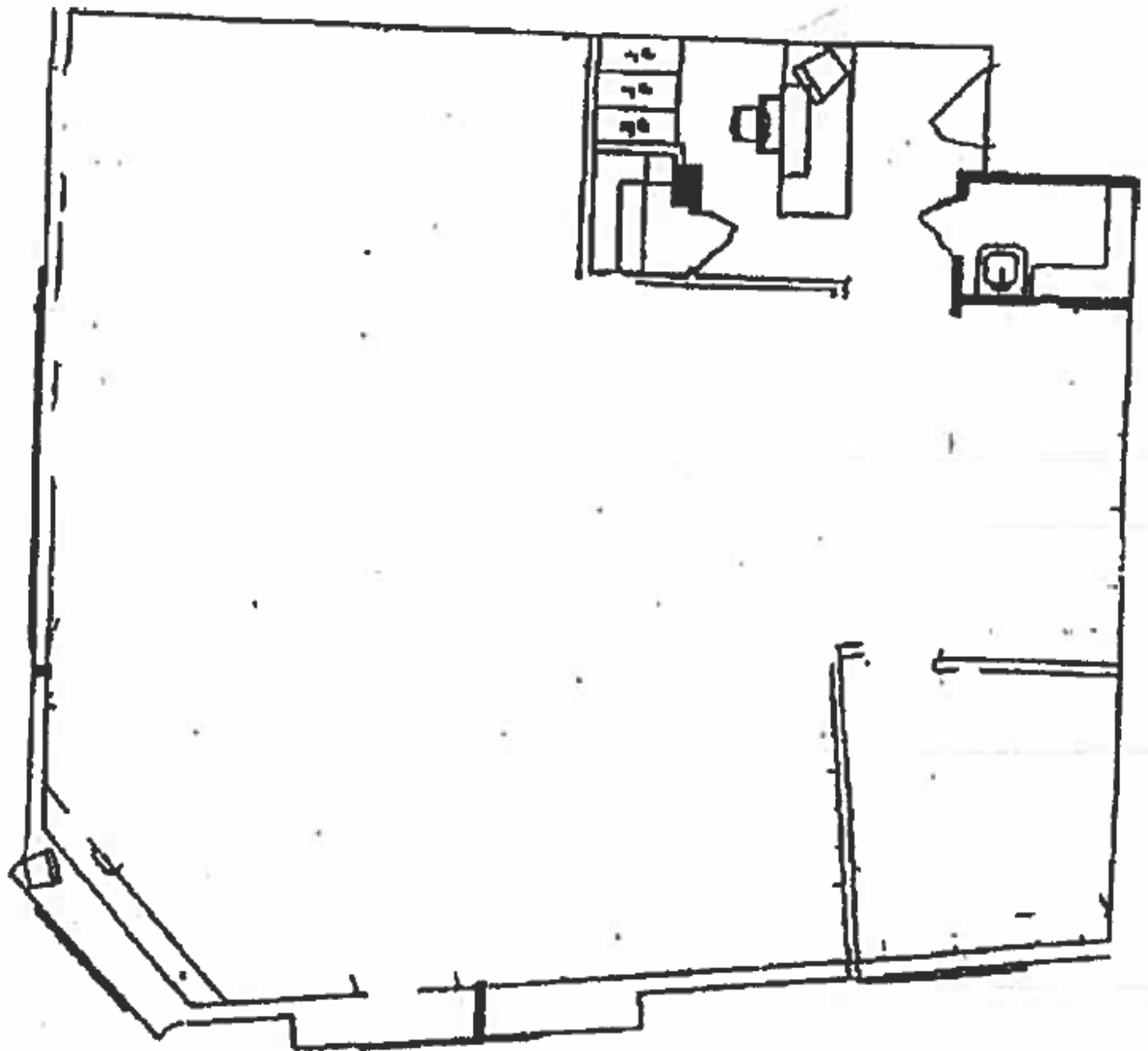


1941 Palmer Avenue Larchmont, NY



SUITE 212

1941 Palmer Avenue Larchmont, NY



1941 Palmer Avenue Larchmont, NY

One West Avenue, Larchmont, NY
Second Floor Office Floor Plan

