

OFFICE SPACES FOR LEASE



**GOLDSCHMIDT
& ASSOCIATES**

Commercial Real Estate Group



1941 Palmer Avenue
One West Avenue
Two East Avenue
Larchmont, New York

Property Features

- » 405,618, 1,553 RSF Spaces Available
- » Elevator Building
- » Windowed
- » Separate Electric & HVAC
- » On Site and Street Parking
- » Short Walk to Metro North Train
- » 24/7 Access
- » Close to Exit 16 off I95
- » Close to Banks, Restaurants, Shopping
- » Immediate Occupancy

Asking Rent: \$32- \$35 per

CONTACT

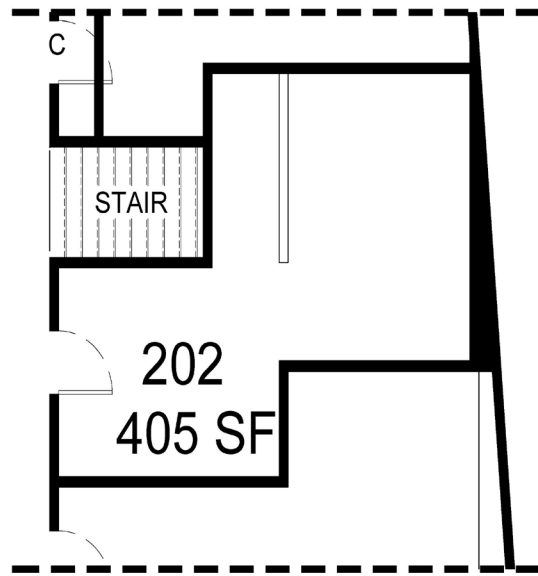
Exclusive Agent:

Eric S. Goldschmidt

Phone: 914-723-1616

Email: eric@ga-re.com

1941 Palmer Avenue Larchmont, NY



SUITE: 202

1 WEST / 2 EAST AVENUE
LARCHMONT

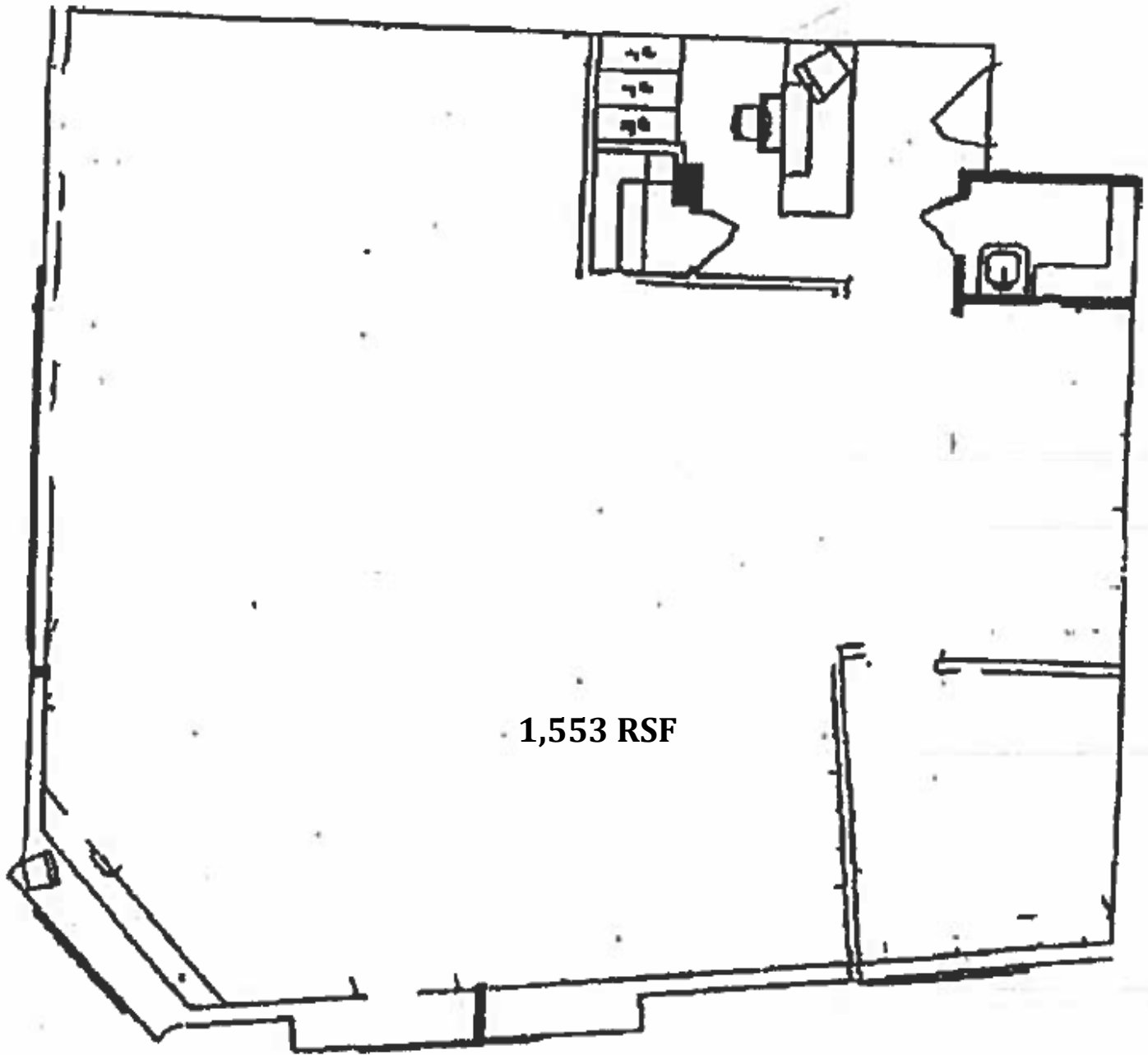
SCALE: $\frac{3}{16}'' = 1'$

DATE: 05.28.2019 REV:00

DRAWN BY: M.A.D.

A
2.02

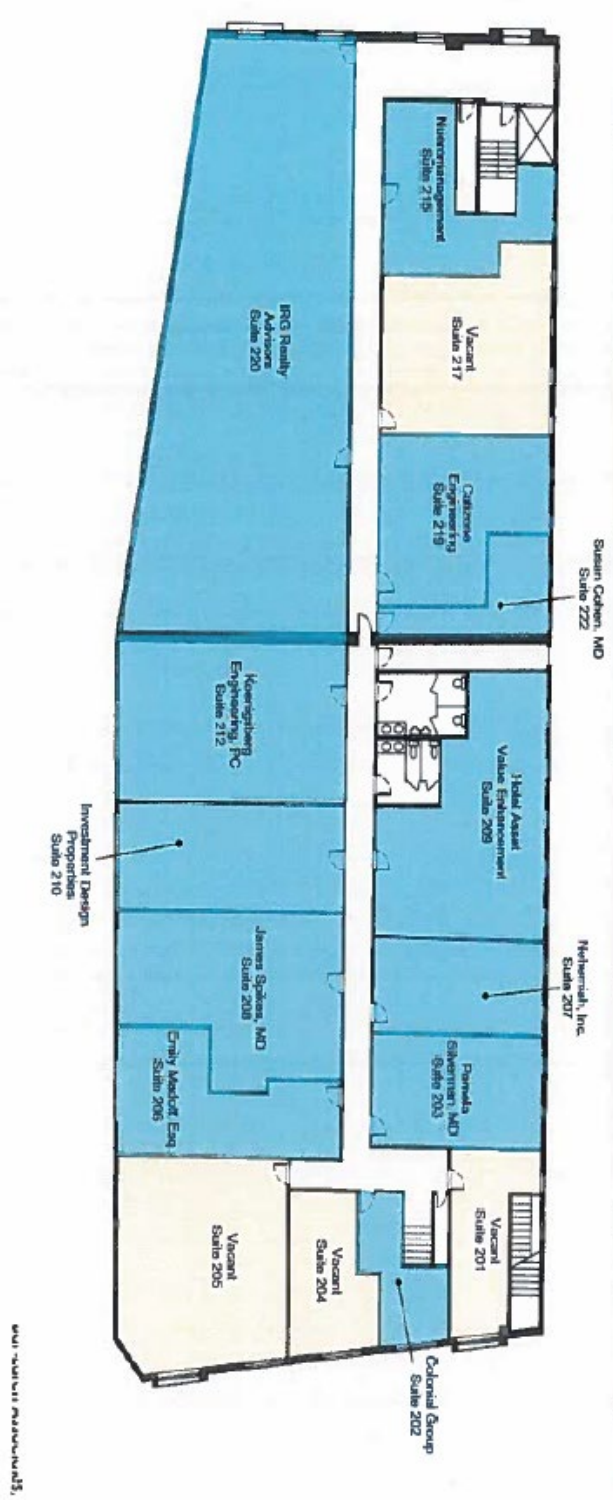
1941 Palmer Avenue Larchmont, NY



1,553 RSF

1941 Palmer Avenue Larchmont, NY

One West Avenue, Larchmont, NY Second Floor Office Floor Plan



© 2011 S&B REALTY, INC.

1941 Palmer Avenue Larchmont, NY

