

# OFFICE SPACE FOR LEASE



1941 Palmer Avenue  
One West Avenue  
Two East Avenue  
Larchmont, New York

## Property Features

- » 467 RSF - 1,831 RSF
- » Elevator Building
- » 5 Built Out Windowed Offices
- » Separate Electric & HVAC
- » On Site and Street Parking
- » Short Walk to Metro North Train
- » 24/7 Access
- » Close to Exit 16 off I95
- » Close to Banks, Restaurants, Shopping
- » Immediate Occupancy

**Asking Rent: \$33 per RSF plus Utilities**

## CONTACT

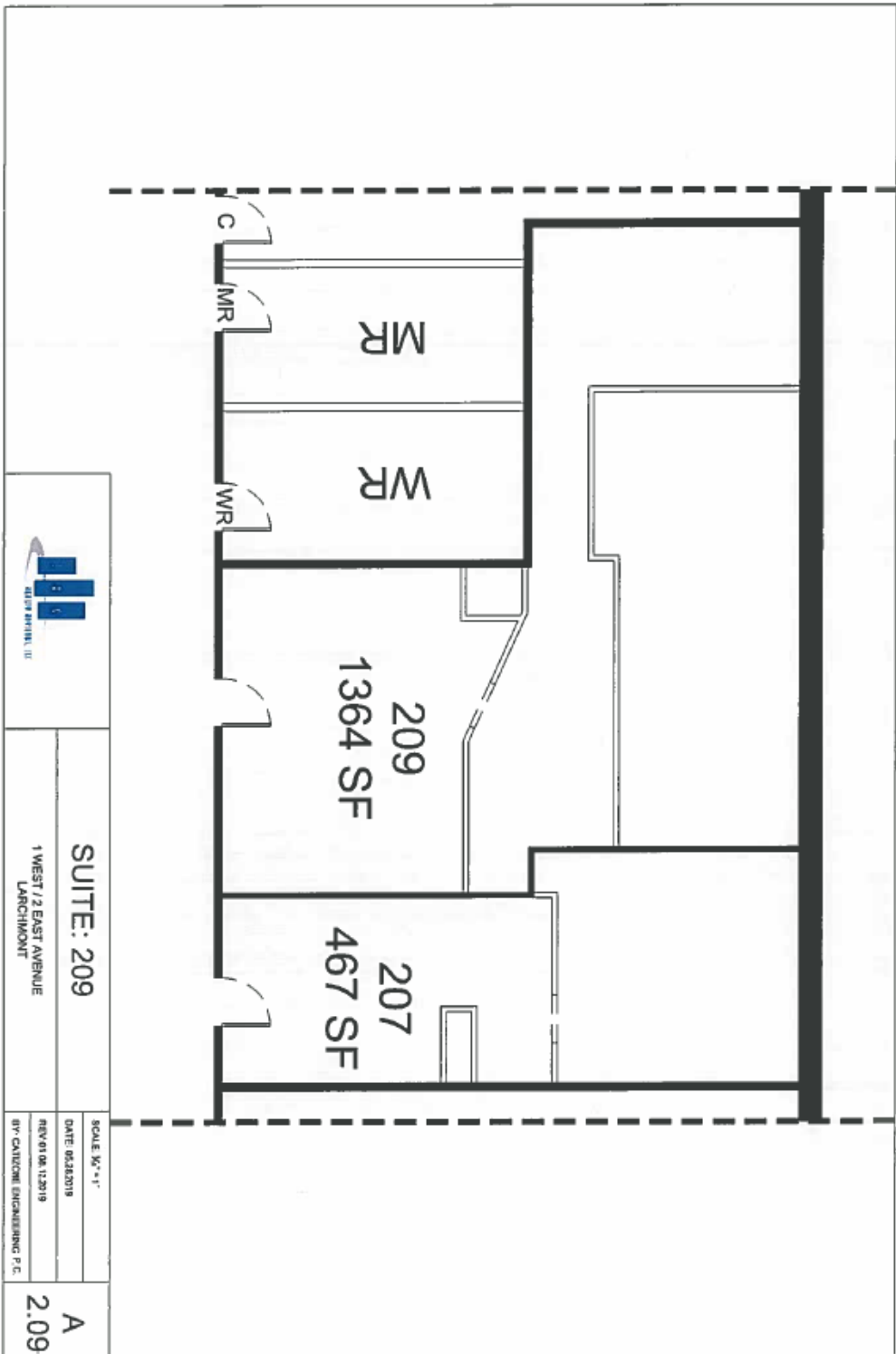
Exclusive Agent:

**Eric S. Goldschmidt**

Phone: 914-723-1616

Email: [eric@ga-re.com](mailto:eric@ga-re.com)

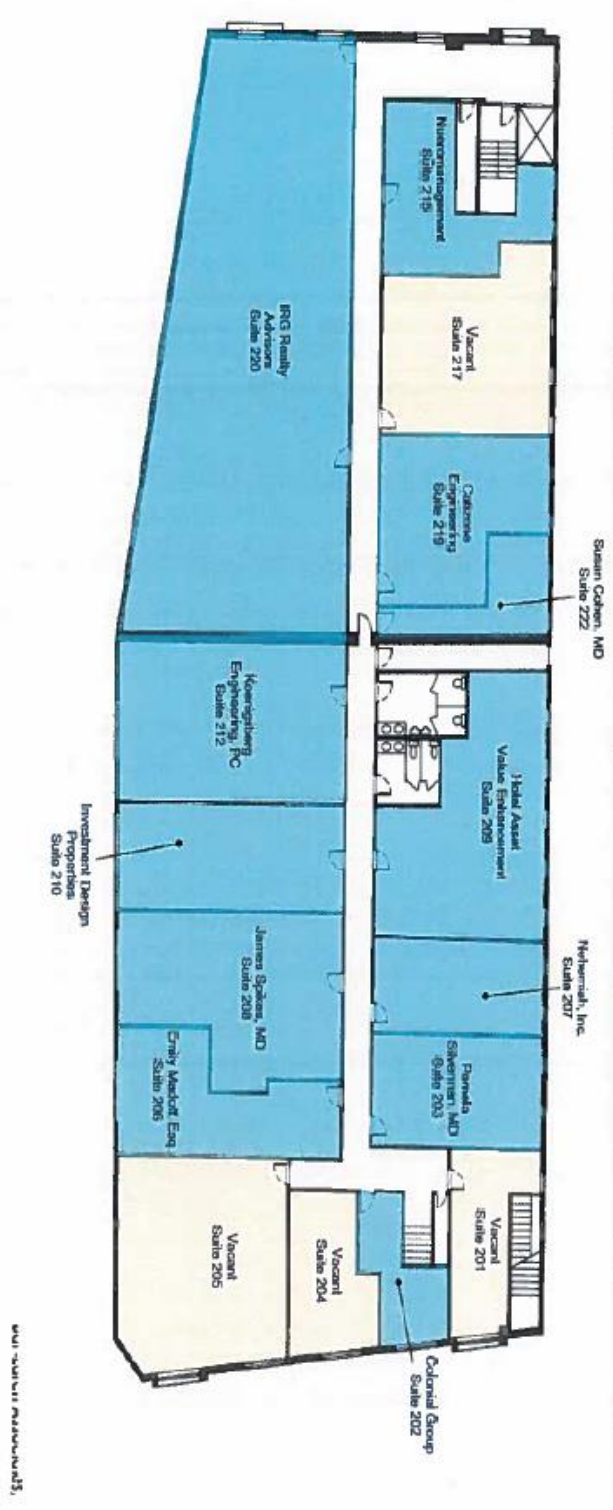
# 1941 Palmer Avenue Larchmont, NY



	<b>SUITE: 209</b>		SCALE: 1/8" = 1'-0"
	1 WEST / 2 EAST AVENUE LARCHMONT		DATE: 06/26/2019
			REV: 01/08/12/2019
			BY: CIVIL ENGINEERING P.C.
			<b>A</b>
			<b>2.09</b>

# 1941 Palmer Avenue Larchmont, NY

## One West Avenue, Larchmont, NY Second Floor Office Floor Plan



001-303-1111

# 1941 Palmer Avenue Larchmont, NY

