

1941 Palmer Avenue
One West Avenue
Two East Avenue
Larchmont, New York

Property Features

- » 360 SF - 1,500 RSF
- » Elevator Building
- » Large Corner Office
- » On Site and Street Parking
- » Short Walk to Metro North Train
- » Close to Exit 16 off I95
- » Close to Banks, Restaurants, Shopping
- » Immediate Occupancy

Asking Rent: \$30 PSF plus Electric

CONTACT

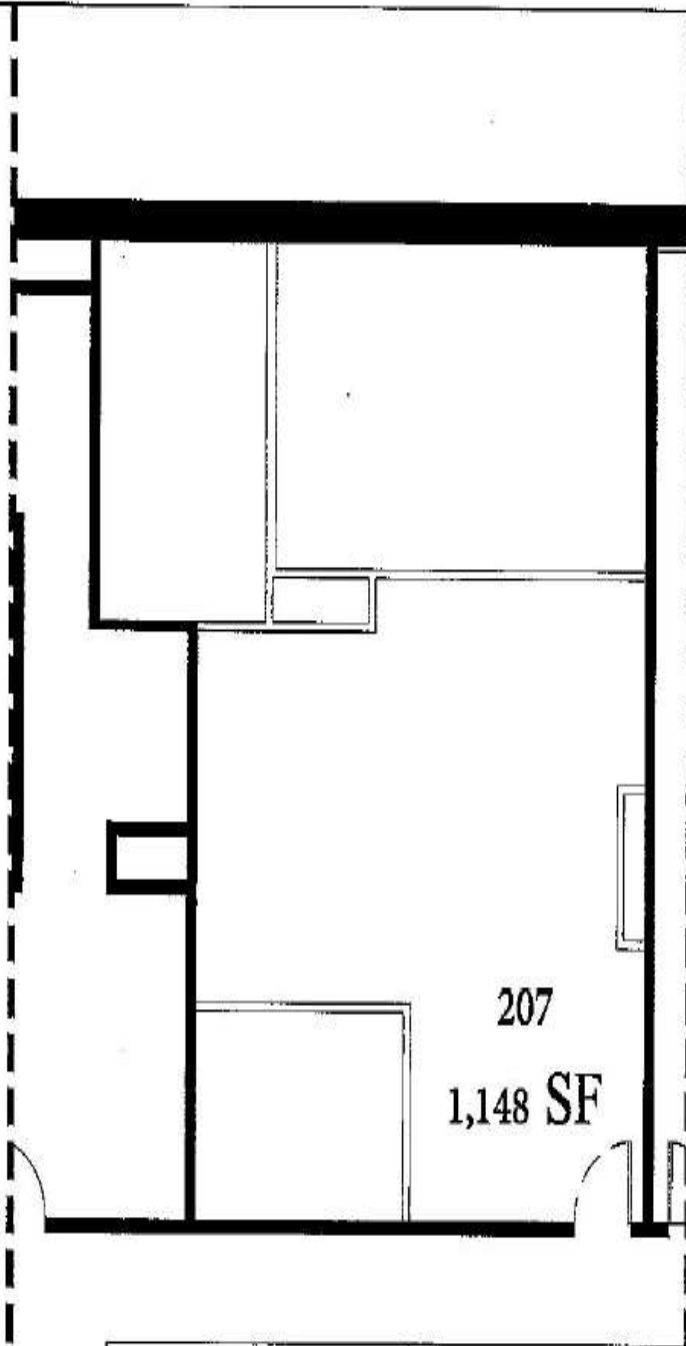
Exclusive Agent:

Eric S. Goldschmidt

Phone: 914-723-1616

Email: eric@ga-re.com

1941 Palmer Avenue Larchmont, NY



207
1,148 SF



SUITE: 207

1 WEST / 2 EAST AVENUE
LARCHMONT

SCALE: 3/8" = 1'

DATE: 05.20.2019 REV: 00

DRAWN BY: M.A.D.

A
2.07

1941 Palmer Avenue Larchmont, NY

