

RETAIL SPACE FOR LEASE



**GOLDSCHMIDT
& ASSOCIATES**

Commercial Real Estate Group



KOHL'S SHOPPING CENTER 2350 Central Park Avenue Yonkers, New York

Property Features

- » 5,517 SF
- » 60' Frontage. End Cap
- » 500+ Parking Spaces
- » Join: Kohls, Petco, CVS, Nathans, Mattress Firm, Chase Bank, Wells Fargo Bank
- » Daily Traffic Count: 50,760

Demographics

» Population	<u>3 Mile</u> 131,002	<u>5 Mile</u> 420,077	<u>7 Mile</u> 813,626
» Avg HH Income	\$162,718	\$131,104	\$115,259

» **Asking Rent PSF - Price Upon Request**

Contact:

Exclusive Agent:

Pam Bren Goldschmidt

Phone: 914-723-1616

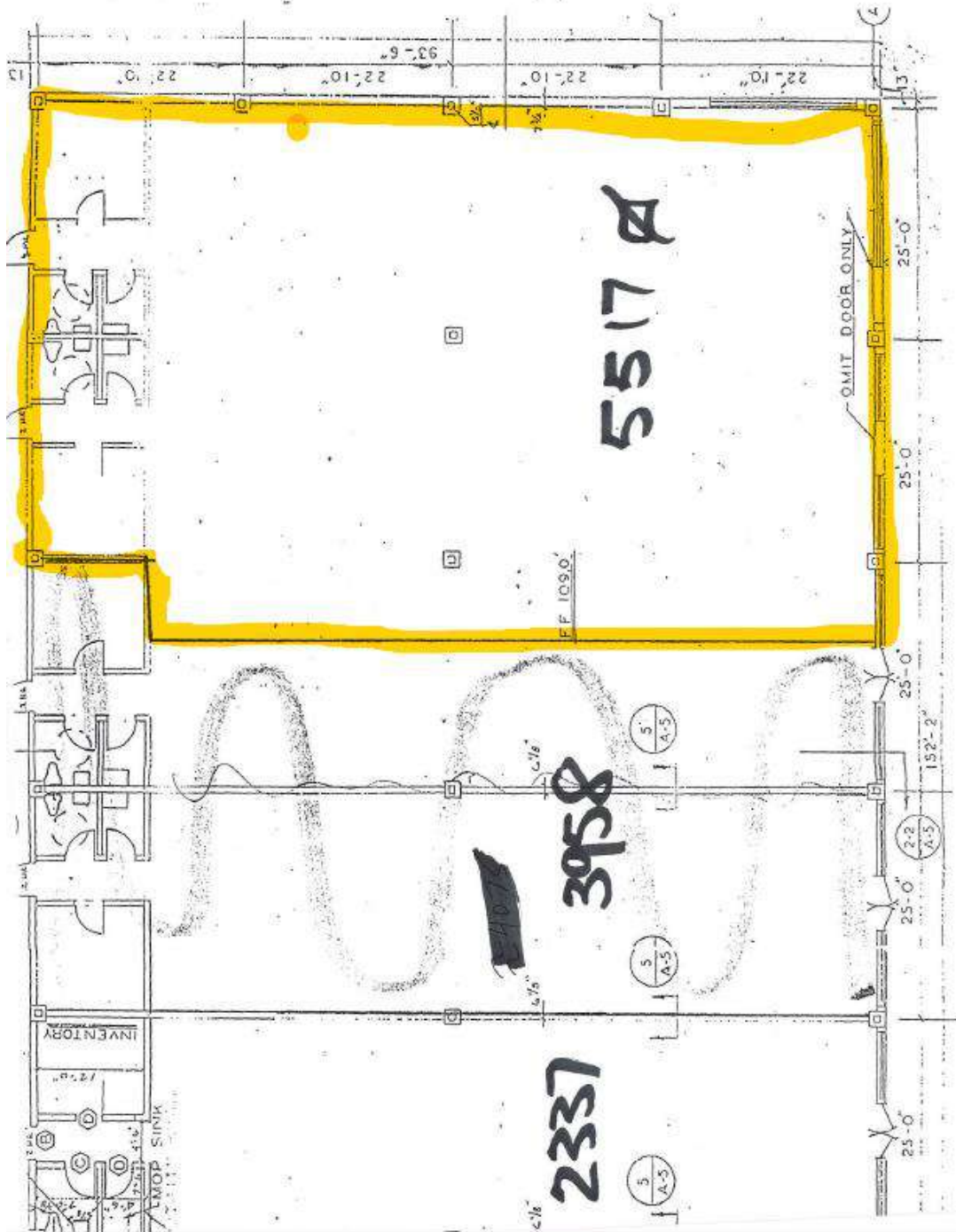
Email: pam@ga-re.com

2350 Central Avenue Yonkers, NY



All information furnished regarding property for sale, rental or financing is from sources deemed reliable; but no warranty or representation is made to the accuracy there of and same is submitted subject to errors, omissions, changes of price, rental or other conditions prior sales, sales, lease or withdrawal without notice.

2350 Central Avenue Yonkers, NY



All information furnished regarding property for sale, rental or financing is from sources deemed reliable; but no warranty or representation is made to the accuracy there of and same is submitted subject to errors, omissions, changes of price, rental or other conditions prior sales, sales, lease or withdrawal without notice.

2350 Central Avenue Yonkers, NY



All information furnished regarding property for sale, rental or financing is from sources deemed reliable; but no warranty or representation is made to the accuracy there of and same is submitted subject to errors, omissions, changes of price, rental or other conditions prior sales, sales, lease or withdrawal without notice.