

RETAIL SPACE FOR LEASE



**GOLDSCHMIDT
& ASSOCIATES**

Commercial Real Estate Group



1949 Palmer Avenue
Larchmont, New York

Property Features

- » 1,963 SF
- » 25' +/- Frontage
- » On Site Parking
- » Walk to Larchmont Train Station
- » Central HVAC
- » Near Starbucks, Verizon, Banks, Restaurants
- » Sorry, No Food

Demographics

	<u>1 Mile</u>	<u>3 Mile</u>	<u>5 Mile</u>
» Population	20,012	128,133	336,249
» Avg HH Income	\$117,568	\$94,303	\$87,283

Asking Rent: \$35 per SF NN

CONTACT

Exclusive Agent:

Eric S. Goldschmidt

Phone: 914-723-1616

Email: eric@ga-re.com

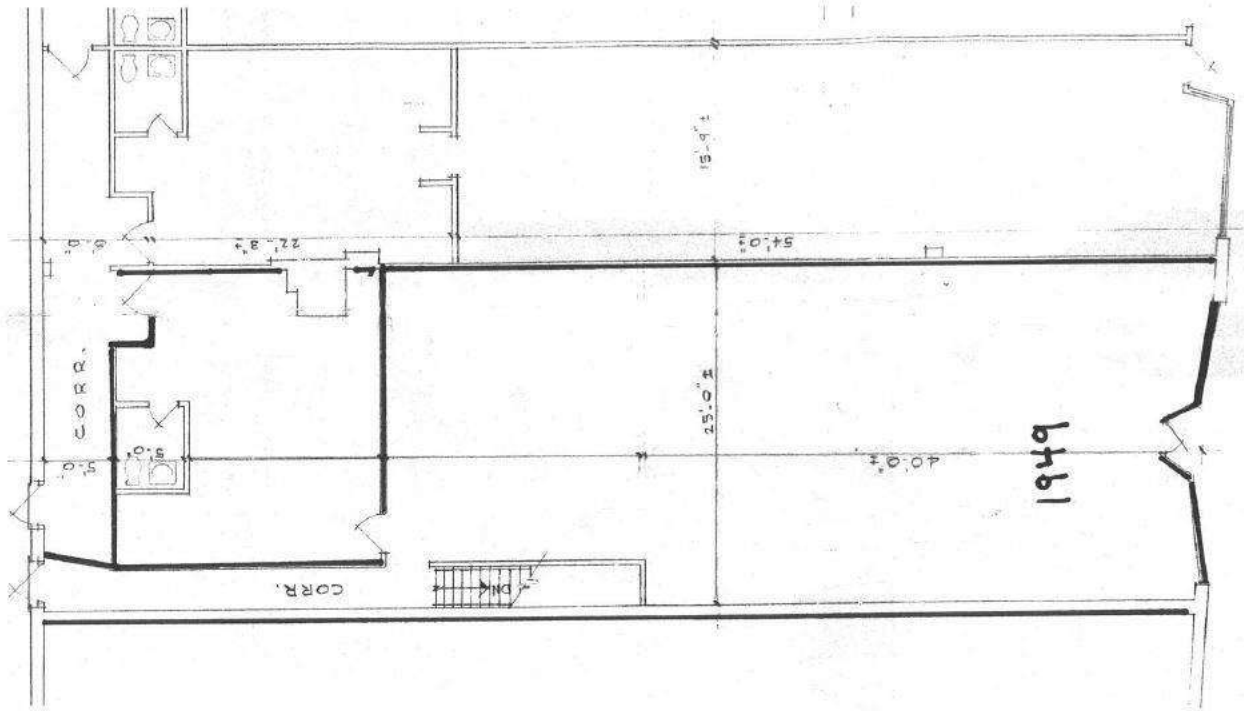
1949 Palmer Avenue Larchmont, NY



1949 Palmer Avenue Larchmont, NY



1949 Palmer Avenue Larchmont, NY



1949 Palmer Avenue Larchmont, NY

