

# OFFICE / MEDICAL/DENTAL 1,235 RSF SPACE FOR LEASE



**GOLDSCHMIDT  
& ASSOCIATES**

Commercial Real Estate Group



**2 Overhill Road**  
Scarsdale, New York

## Property Features

- » 2<sup>nd</sup> Floor – 1,235 RSF
- » Extended FREE HVAC Hours: Mon-Fri 7am-9pm & Sat- 8am-3pm
- » Former Dental Office with Private Bathroom
- » Perfect for Medical and General Office Use
- » Includes 2 Valet Garage Spaces
- » Close to Lawrence and White Plains Hospitals
- » Across from Train Station, Bus Stop, & Bronx River PKWY
- » In Popular Scarsdale Village – Restaurants, Banks, Stores
- » Two Elevators, New Building Upgrades
- » 24/7 Access
- » Join Major Medical Groups, Stark Office Suites, First Republic Bank, Law Offices & Financial Firms

## Contact:

Exclusive Agent:

**Eric S. Goldschmidt**

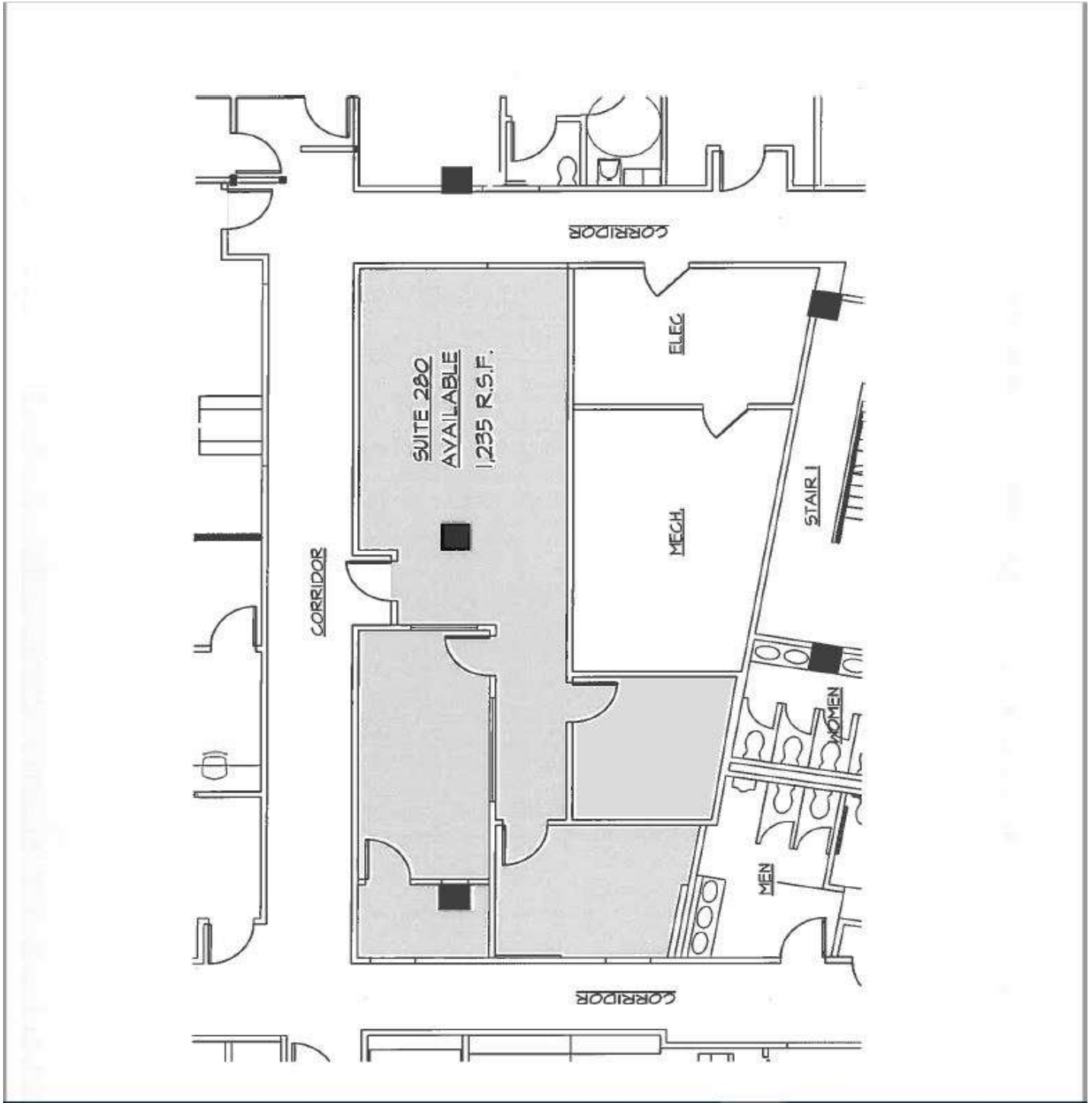
Phone: 914-723-1616

Email: [Eric@ga-re.com](mailto:Eric@ga-re.com)

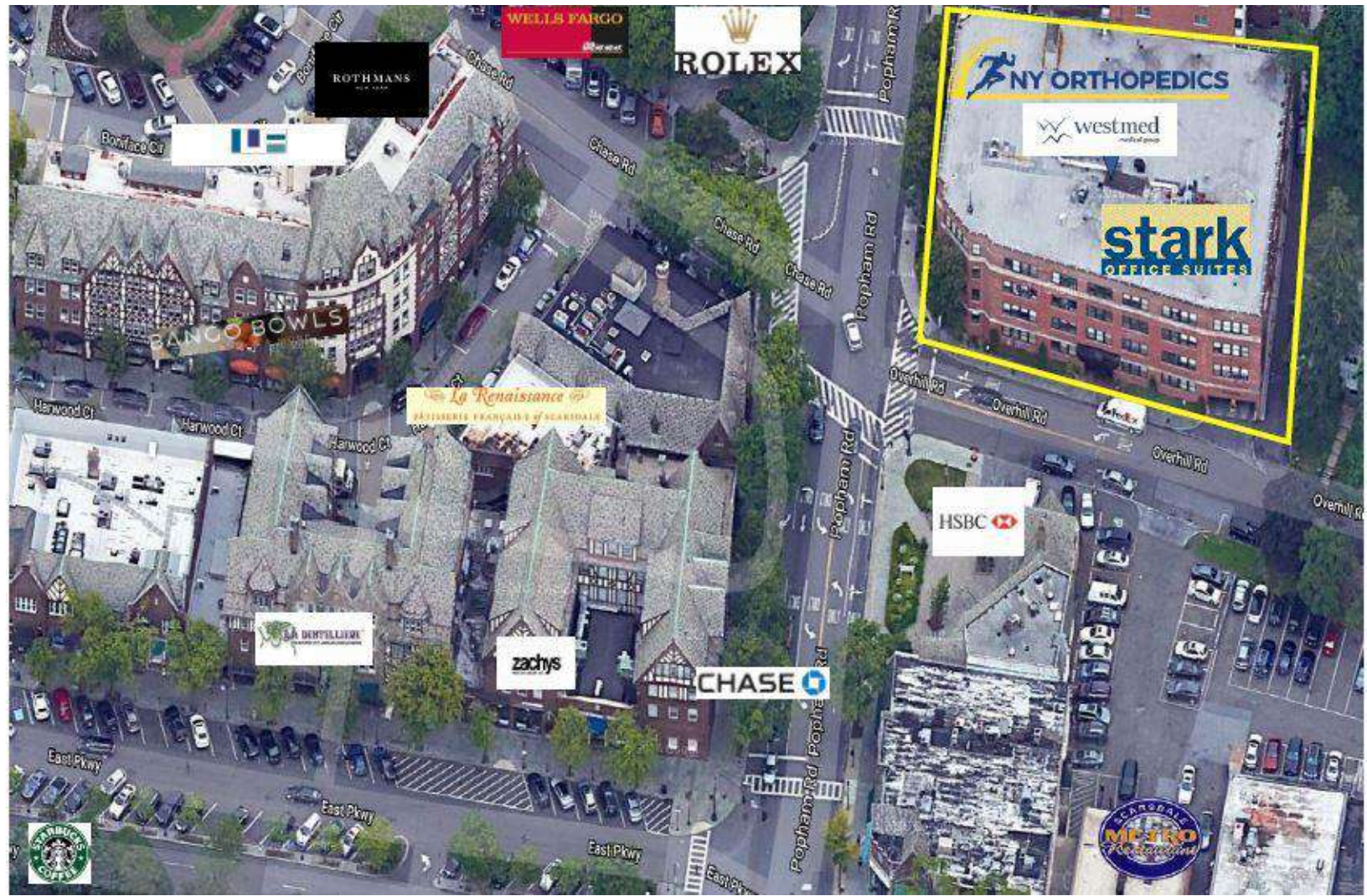
## ASKING RENT:

» **\$3,850 Monthly**  
**Including Electric**

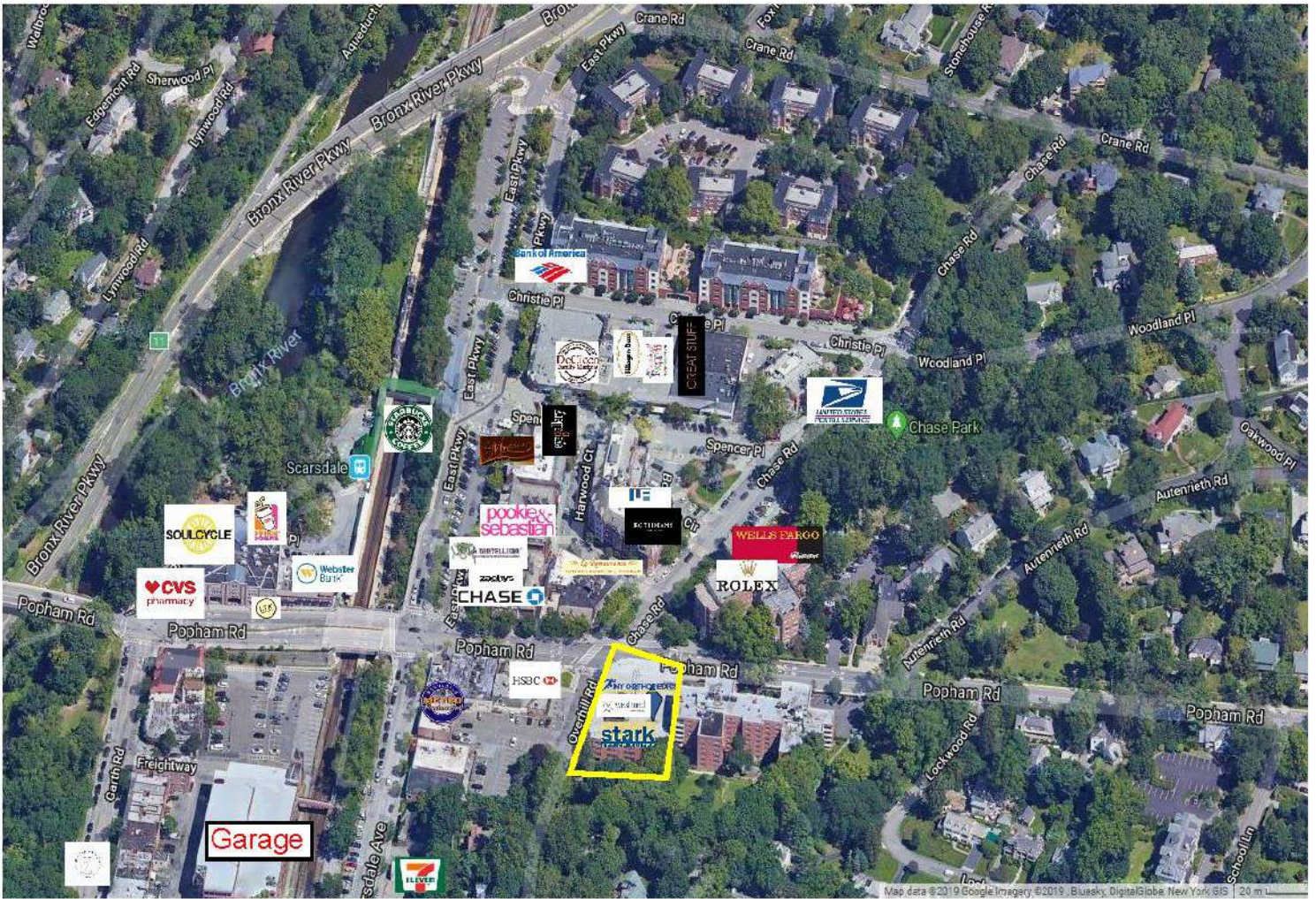
# 2nd Floor 1,235 RSF



All information furnished regarding property for sale, rental or financing is from sources deemed reliable; but no warranty or representation is made to the accuracy thereof and same is submitted subject to errors, omissions, changes of price, rental or other conditions prior sales, sales, lease or withdrawal without notice.



All information furnished regarding property for sale, rental or financing is from sources deemed reliable; but no warranty or representation is made to the accuracy thereof and same is submitted subject to errors, omissions, changes of price, rental or other conditions prior sales, sales, lease or withdrawal without notice.



## Garage Entrance



All information furnished regarding property for sale, rental or financing is from sources deemed reliable; but no warranty or representation is made to the accuracy thereof and same is submitted subject to errors, omissions, changes of price, rental or other conditions prior sales, sales, lease or withdrawal without notice.