

# FOOD OPERATION RETAIL FOR LEASE



**GOLDSCHMIDT  
& ASSOCIATES**

Commercial Real Estate Group

750 Main Street  
4 Central Row  
Hartford, Connecticut



## CONTACT

Eric S. Goldschmidt

Phone: 914-723-1616

Email: [eric@ga-re.com](mailto:eric@ga-re.com)

750 Main Street  
4 Central Row  
Hartford, Connecticut

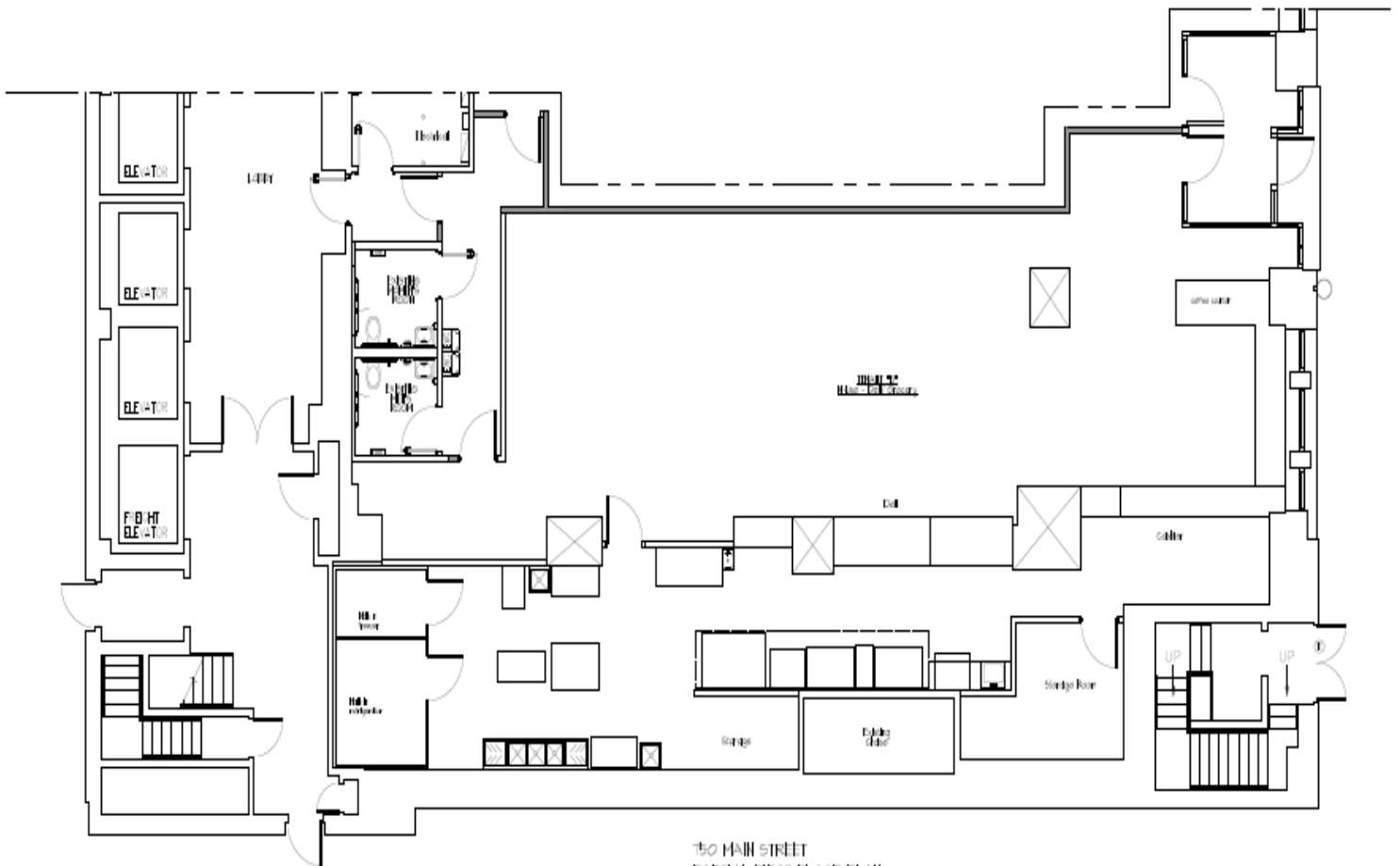
## Property Features

- » 3,140 RSF
- » Heavily Equipped
- » 14' 6" Ceilings
- » Traffic Lit Corner - Main Street & Central Row
- » 4 Central Row Entrance Plus Direct Lobby Access
- » 160,000 RSF Office Building
- » In The Heart of Hartford CBD
- » Immediate Occupancy
- » Across From CVS
- » Surrounded By 4,500,000 SF of Office Space
- » Walk To UCONN - 3,000 Students Plus 250 Faculty
- » Walk To Theater, Sports Arena, Minor League Baseball Park

<u>Demographics</u>	<u>1 Mile</u>	<u>3 Mile</u>	<u>5 Mile</u>
» Population	20,467	150,213	270,841

Asking Rent - \$25 per S.F. Plus Utilities

First Floor Plan



750 MAIN STREET  
PARTIAL FIRST FLOOR PLAN  
10/16/1999

750 Main Street  
4 Central Row  
Hartford, Connecticut



750 Main Street  
4 Central Row  
Hartford, Connecticut



750 Main Street  
4 Central Row  
Hartford, Connecticut

