

RETAIL/OFFICE SPACE FOR LEASE



7 Popham Road
Scarsdale, New York

Property Features

- » 1,600 RSF
- » Large Windows
- » Separately Metered Electric
- » Perfect for Medical or General Office Use
- » In Scarsdale Village – Daily Traffic Count 11,000
- » Adjacent to Train Station, Bus Stop, & Bronx River PKWY
- » 24/7 Access
- » Join CVS, Bar Method, Scarsdale Prep, Scarsdale Pediatrics, Webster Bank, LTK, Dunkin Donuts and others.

Demographics	3 Mile	5 Mile	7 Mile
» Population	15,784	113,588	354,403
» Avg HH Income	\$180,249	\$146,585	\$118,951

Contact:

Exclusive Agent:

JoAnn Picarillo

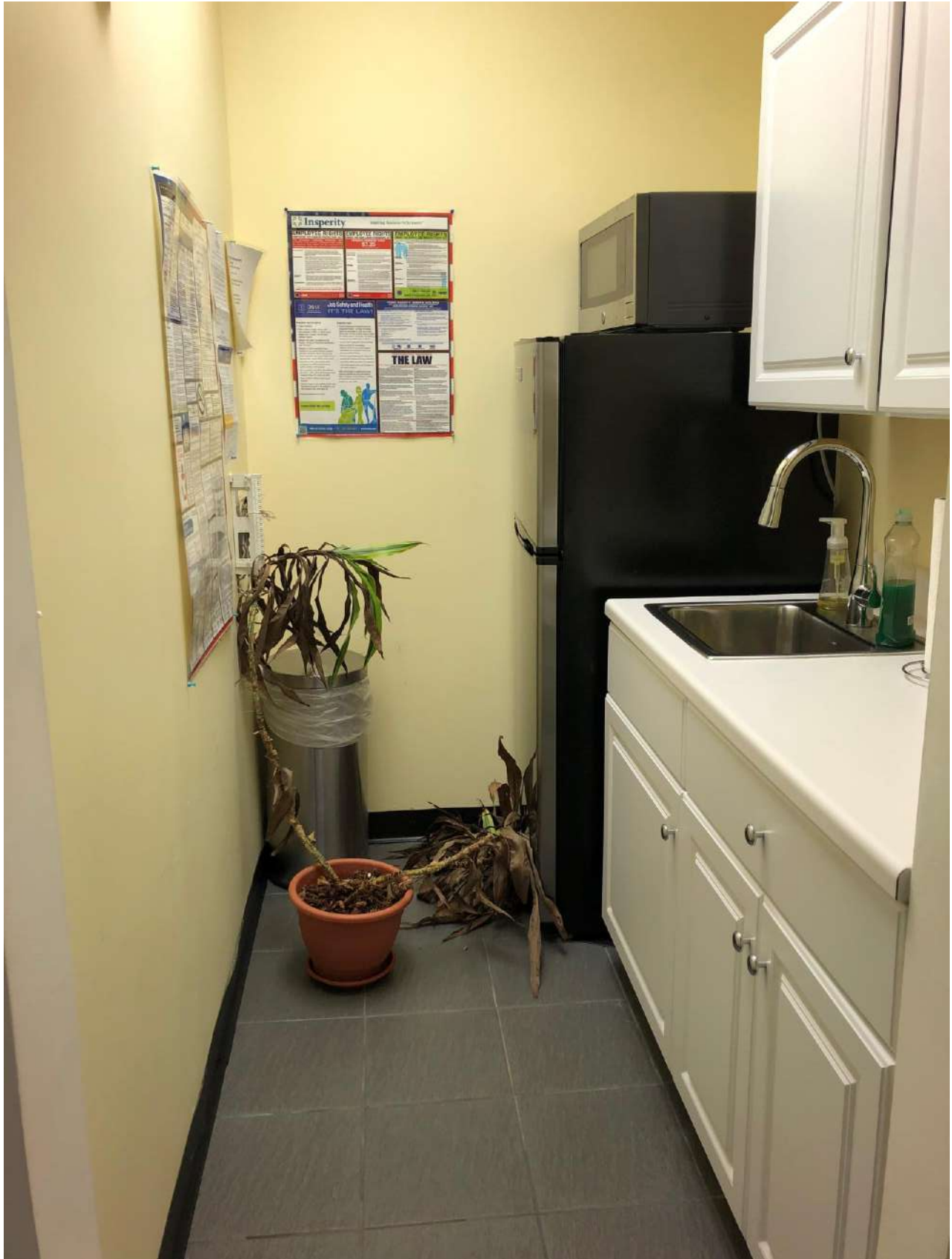
Phone: 914-723-1616

Email: joann@ga-re.com

ASKING RENT:

» \$37 PRSF

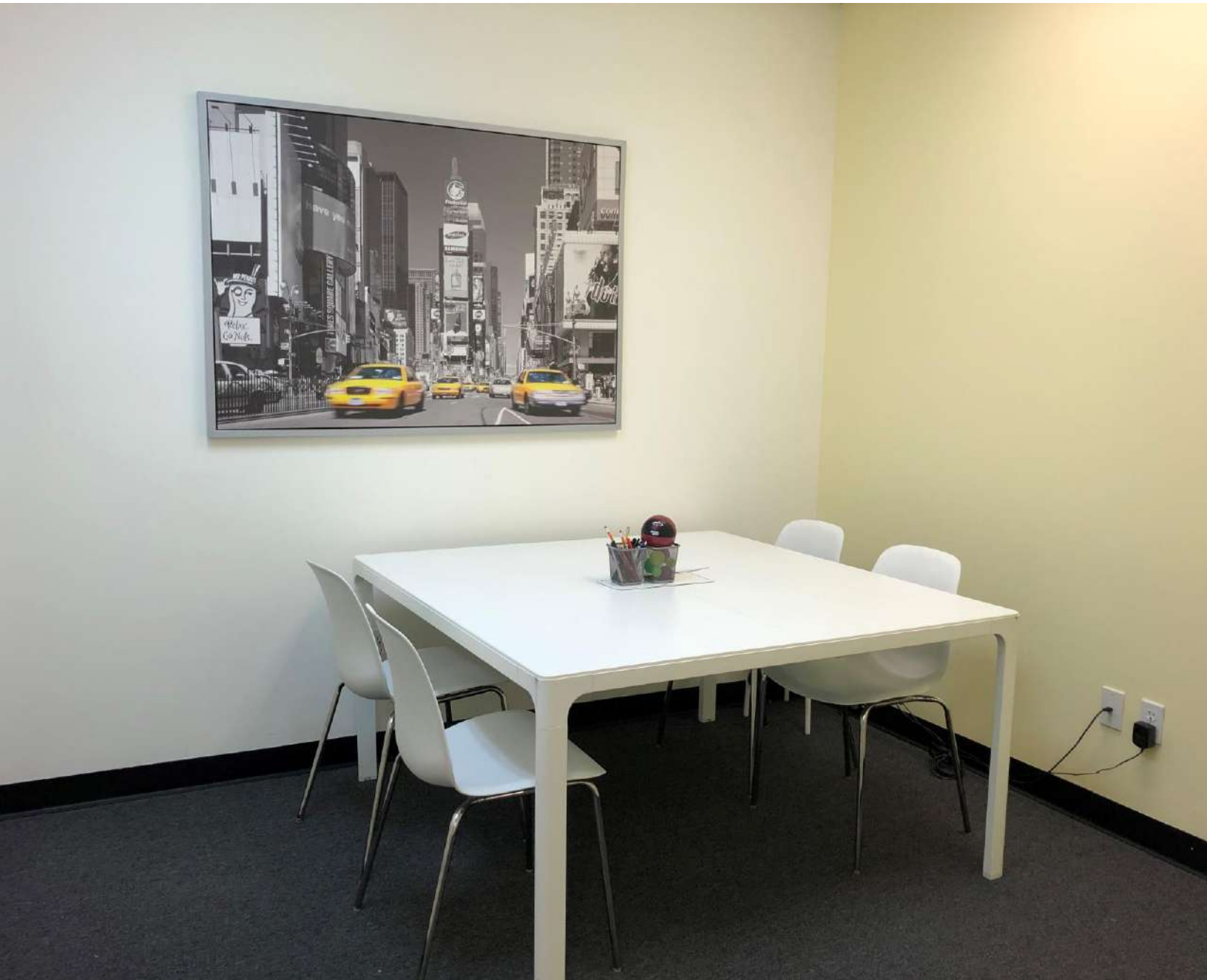
Kitchen Area



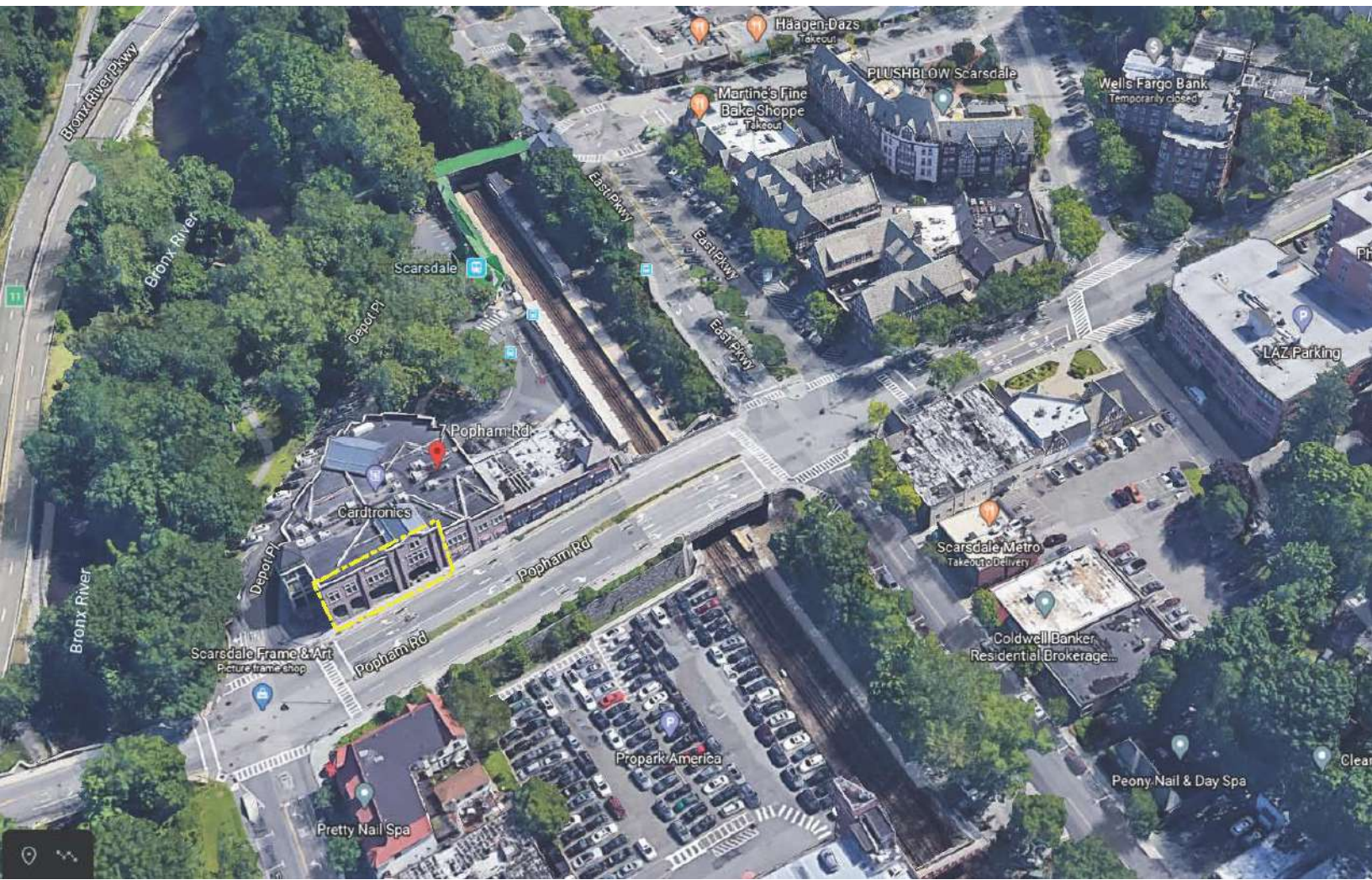
All information furnished regarding property for sale, rental or financing is from sources deemed reliable; but no warranty or representation is made to the accuracy thereof and same is submitted subject to errors, omissions, changes of price, rental or other conditions prior sales, sales, lease or withdrawal without notice.



All information furnished regarding property for sale, rental or financing is from sources deemed reliable; but no warranty or representation is made to the accuracy thereof and same is submitted subject to errors, omissions, changes of price, rental or other conditions prior sales, sales, lease or withdrawal without notice.



All information furnished regarding property for sale, rental or financing is from sources deemed reliable; but no warranty or representation is made to the accuracy thereof and same is submitted subject to errors, omissions, changes of price, rental or other conditions prior sales, sales, lease or withdrawal without notice.



All information furnished regarding property for sale, rental or financing is from sources deemed reliable; but no warranty or representation is made to the accuracy thereof and same is submitted subject to errors, omissions, changes of price, rental or other conditions prior sales, sales, lease or withdrawal without notice.