

MEDICAL & PROFESSIONAL OFFICE SPACE FOR LEASE



**GOLDSCHMIDT
& ASSOCIATES**

Commercial Real Estate Group



2039 Palmer Avenue
Larchmont, New York

Property Features

- » 1,175 SF - 3,700 SF
- » Medical Uses Permitted
- » Private Bathroom
- » Elevator Building
- » 2/1000 On-Site Parking
- » Separate HVAC and Electric Meters
- » Walk to Metro North Train
- » Close to Exit 16 off I95
- » Close to Banks, Restaurants, Shopping
- » Immediate Occupancy

Asking Rent: \$27- \$31 PSF plus Electric

CONTACT

Exclusive Agent:

Eric S. Goldschmidt

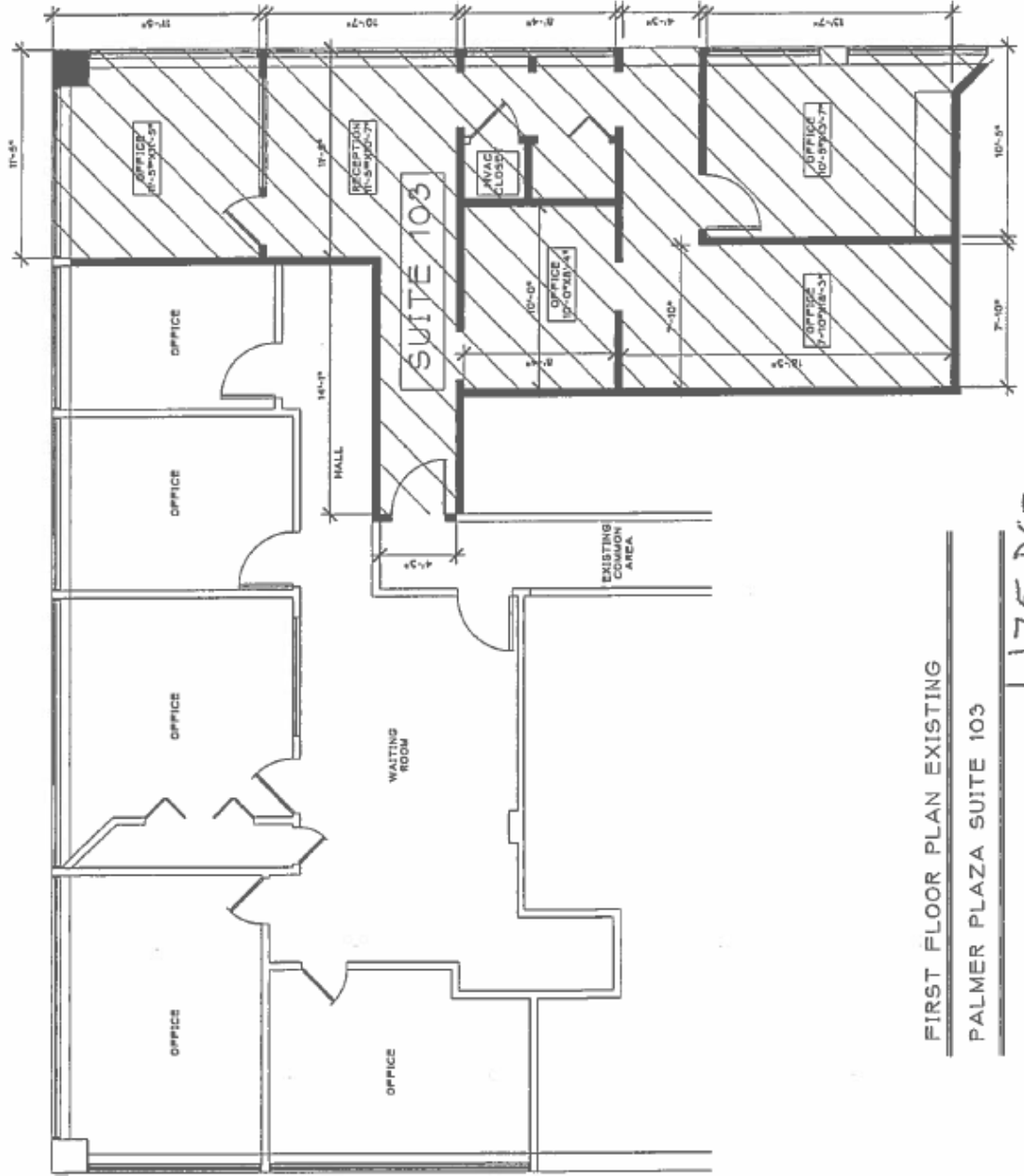
Phone: 914-723-1616

Email: eric@ga-re.com

2039 Palmer Avenue Larchmont, NY



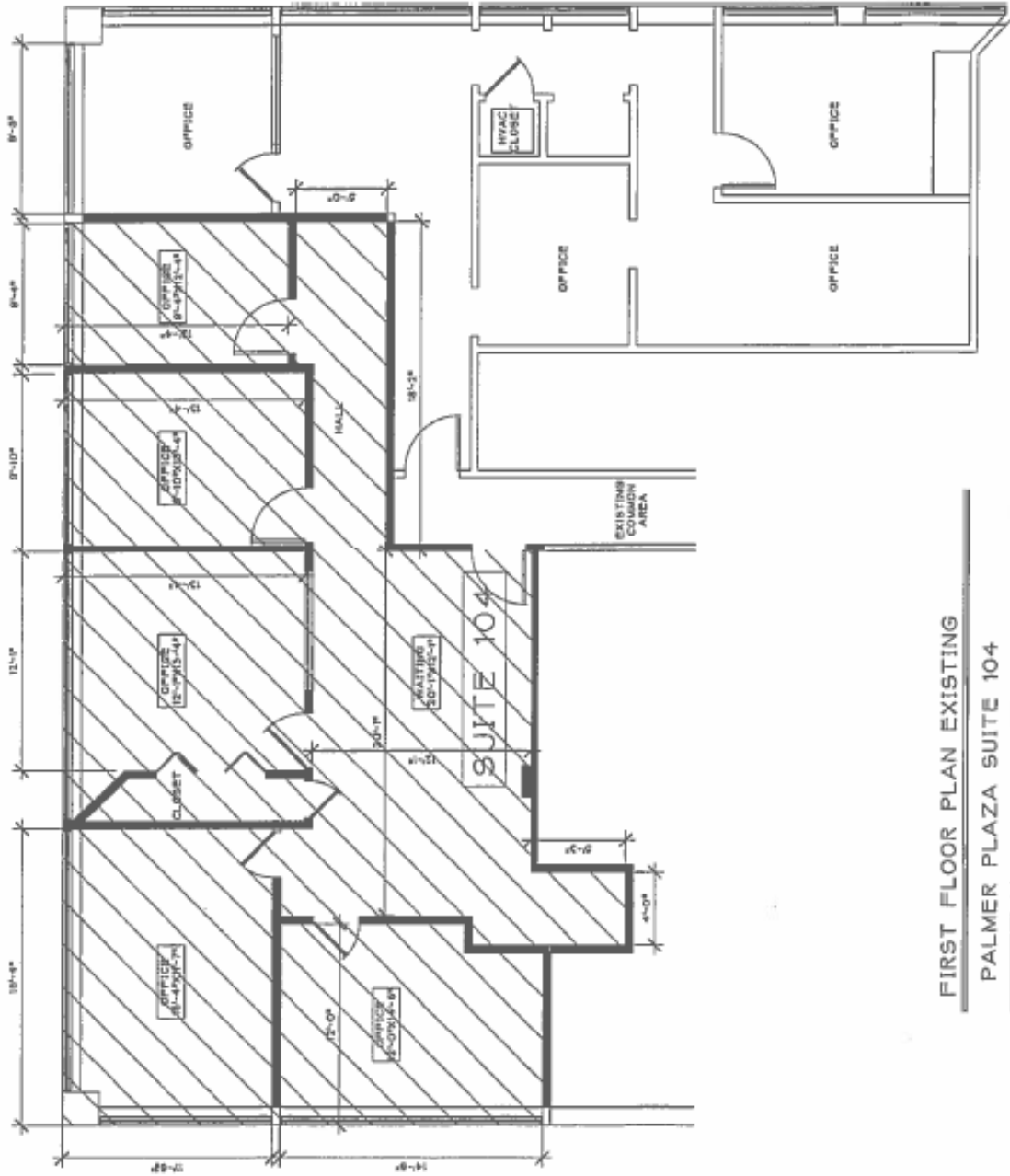
2039 Palmer Avenue Larchmont, NY



FIRST FLOOR PLAN EXISTING
PALMER PLAZA SUITE 103

1,175 RSF

2039 Palmer Avenue Larchmont, NY

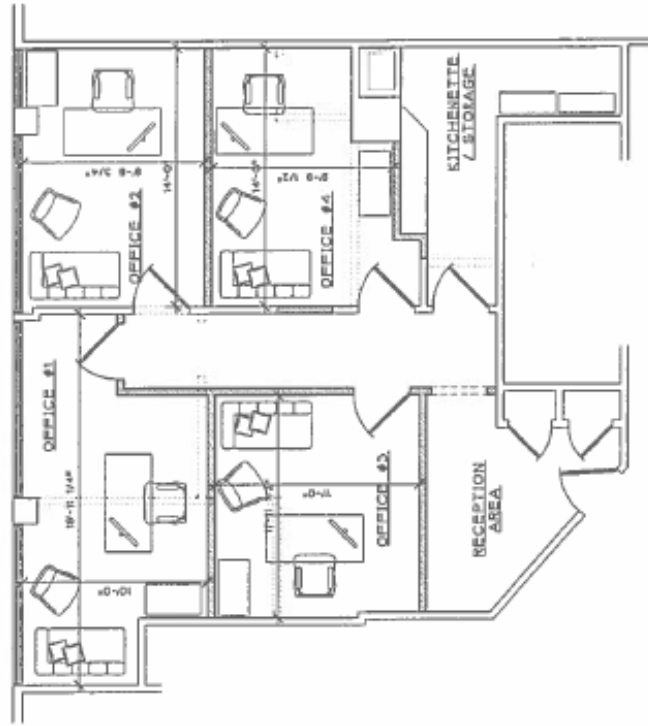


FIRST FLOOR PLAN EXISTING

PALMER PLAZA SUITE 104

1,850 RSF

2039 Palmer Avenue Larchmont, NY



PROPOSED OFFICE LAYOUT **WALL LEGEND**
3010' x 1'-0"
1,175 RSF

NEW WALL CONSTRUCTION
EXISTING WALLS TO REMAIN
WALLS TO BE REMOVED

302 OFFICE PLAN
204 PALMER AVENUE, LARCHMONT NY
PALMER PLAZA ASSOCIATES
08/03

2039 Palmer Avenue Larchmont, NY

