

OFFICE / MEDICAL SPACE FOR LEASE



**GOLDSCHMIDT
& ASSOCIATES**

Commercial Real Estate Group



1075 Central Park Avenue
Scarsdale, New York

Property Features

- » 700 RSF Available – 3rd Floor
- » Former Dental Space
- » HVAC Hours: Mon-Fri 7am-7pm & Sat- 7am-2pm
- » Traffic Lit Corner
- » Excellent On-Site Parking
- » On-Site Manager
- » Perfect For Medical
- » Close to Bronx River Parkway, Sprain Brook Parkway
- » Just South of Ardsley Road

Traffic Count - 34,290 Cars Daily

Demographics

» Population

1 Mile

17,109

3 Mile

121,132

5 Mile

360,383

» Avg HH Income

\$120,072

\$124,079

\$ 98,247

All information furnished regarding property for sale, rental or financing is from sources deemed reliable; but no warranty or representation is made to the accuracy thereof and same is submitted subject to errors, omissions, changes of price, rental or other conditions prior sales, sales, lease or withdrawal without notice.

Contact:

Exclusive Agent:

Eric S. Goldschmidt

Phone: 914-723-1616 x11

Fax: 914-723-7720

Email: Eric@ga-re.com

ASKING RENT:

» **\$2,100 Monthly**

» **Plus Electric**

3rd Floor - Floor Plan - 700 SF

3RD FLOOR PLAN: 700 RSF
 1/4" = 1'-0"

3RSFPA1215
ET # 28795.004
3RSFPA1215
ET # 28795.004

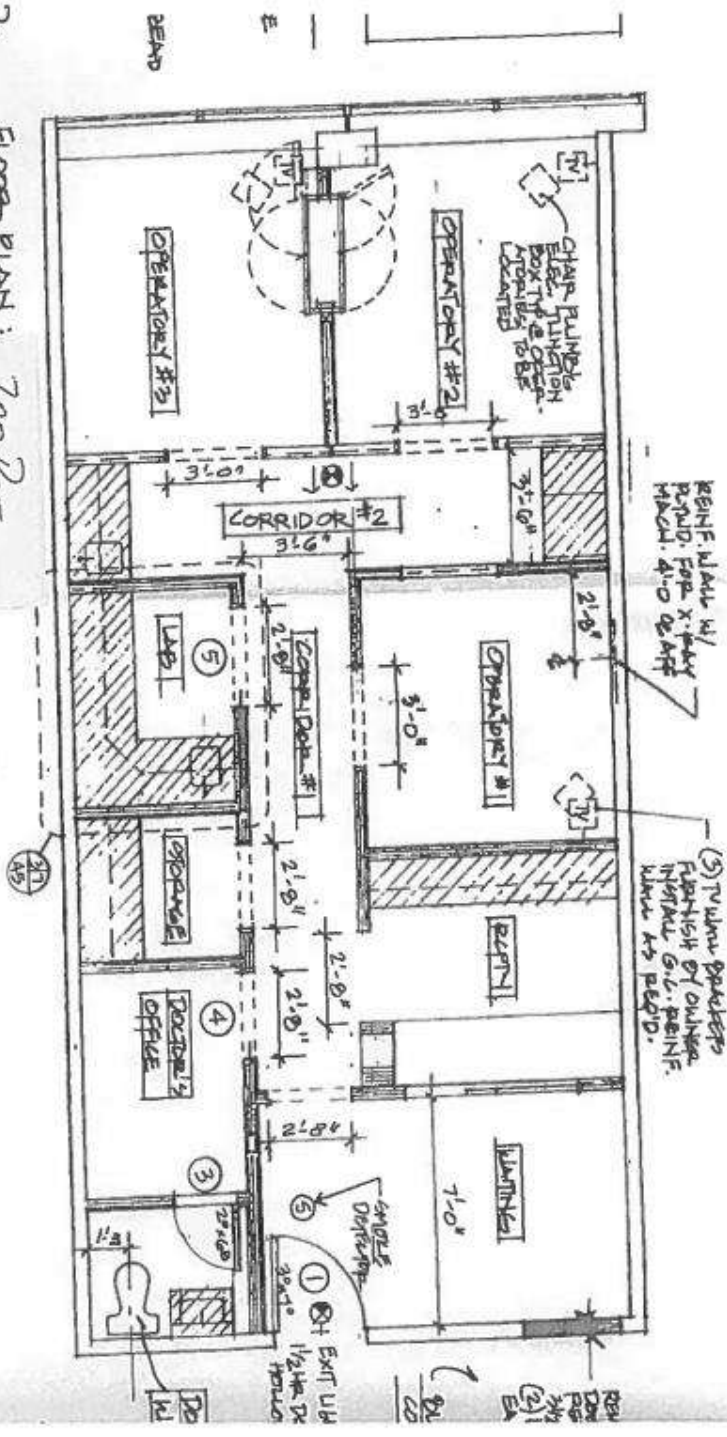
DOORS & HARDWARE

DOOR 1 - FIRE RATED DOOR FOR OUTLET INFRARED G.C. RE USE EXISTING HARDWARE

DOOR 3 - 210X G-I-B. SQUID CORP. W/D. DOOR. PAINT 1388
 260 HINGES SETTING D SERIES PRIVACY

LEGEND

	CABINetry
	EXIST
	NEW
	SPUD



Rear Entrance



- Directions from here
- Directions to here
- What's here?
- Search nearby
- Print
- Add a missing place
- Report a data problem
- Measure distance

