

# TWO RETAIL SPACES FOR LEASE



**GOLDSCHMIDT  
& ASSOCIATES**

Commercial Real Estate Group



**27 Bank Street**  
White Plains, New York

## Property Features

- » 3,500 SF
- » Prime Retail Space Below 501 Luxury Apartments
- » Steps from Metro North
- » Corner Location with Great Visibility
- » Access to Bronx River Parkway and I-287
- » Estimated Daytime Population: 250,000

## Demographics

	<u>1 Mile</u>	<u>3 Mile</u>	<u>5 Mile</u>
» Population	42,346	112,627	209,105
» Avg HH Income	\$106,770	\$154,668	\$183,122

**ASKING RENT: » \$25.00 PSF NNN**

## Contact:

Exclusive Agent:

**Fern Wagner**

Phone: 914-723-1616 x 15

Fax: 914-723-7720

Email: fern@ga-re.com

Exclusive Agent:

**JoAnn Picarillo**

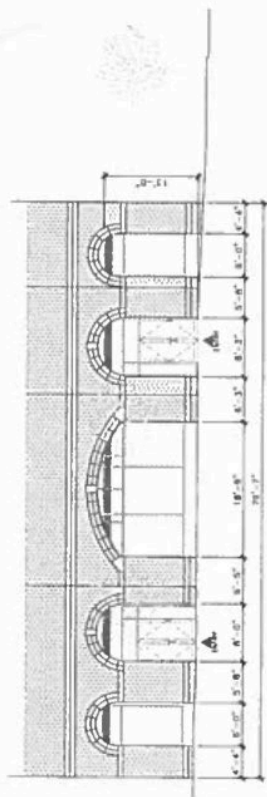
Phone: 914-723-1616 x10

Fax: 914-723-7720

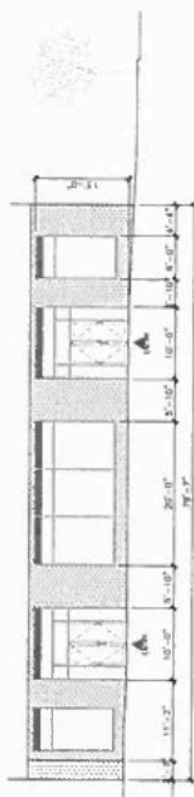
Email: joann@ga-re.com

## 27 Bank Street White Plains, NY

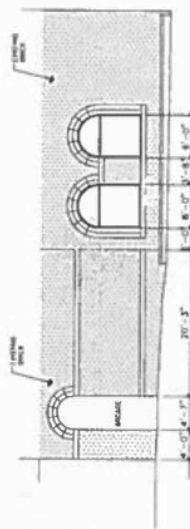




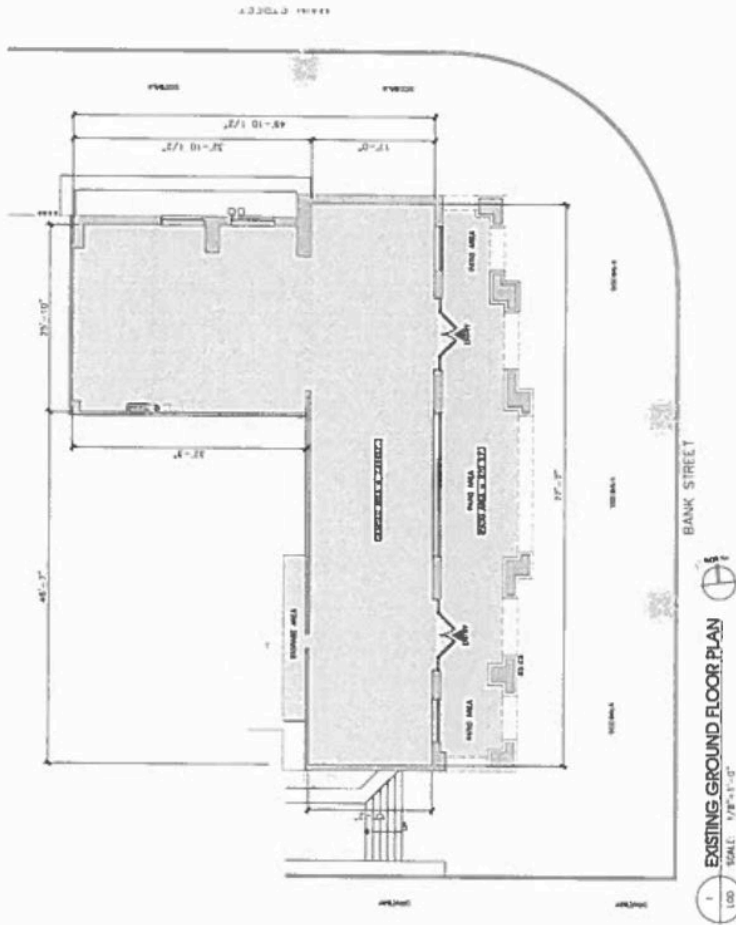
2 BUILDING ELEVATION - BANK STREET  
SCALE: 1/8"=1'-0"



3 STOREFRONT/ARCADE ELEVATION - BANK STREET  
SCALE: 1/8"=1'-0"



4 BUILDING ELEVATION - MAIN STREET  
SCALE: 1/8"=1'-0"



1 EXISTING GROUND FLOOR PLAN  
SCALE: 1/8"=1'-0"

BOZZUTO - 15 BANKS STREET, WHITE PLAINS, NY 10601  
GROUND FLOOR  
OCTOBER 20, 2015



112 WEST 87TH STREET, NEW YORK, NY 10024  
312.267.6011  
HBC ARCHITECTS





All information furnished regarding property for sale, rental or financing is from sources deemed reliable; but no warranty or representation is made to the accuracy thereof and same is submitted subject to errors, omissions, changes of price, rental or other conditions prior sales, sales, lease or withdrawal without notice.