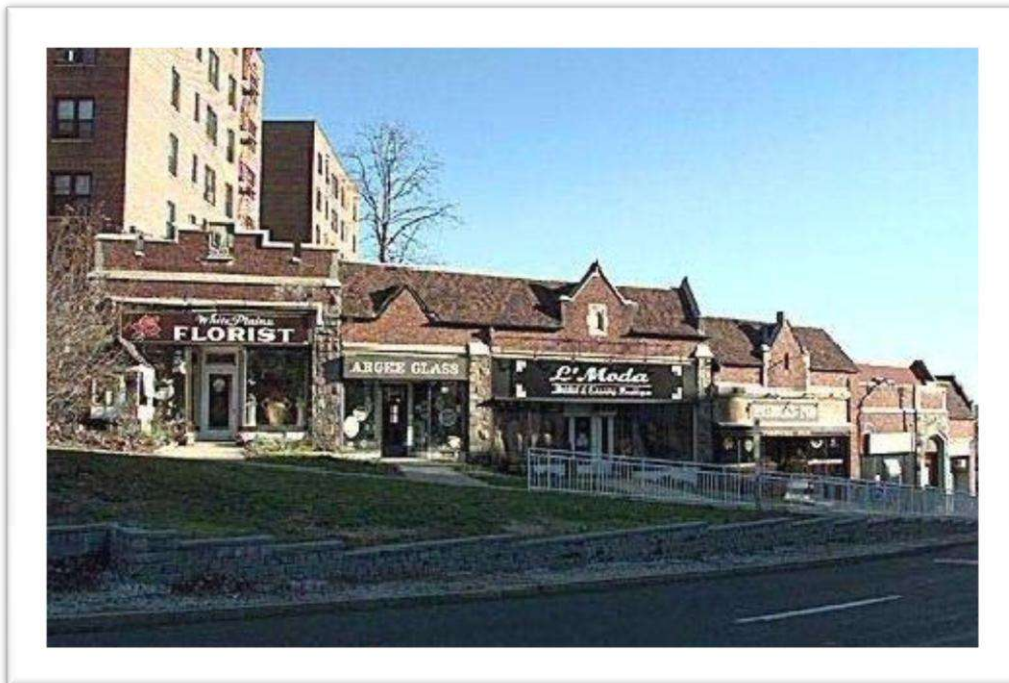


## **GOLDSCHMIDT & ASSOCIATES**

**ONE CHASE ROAD • SCARSDALE, NEW YORK 10583 • TEL (914) 723-1616 • FAX (914) 723-7720**  
[www.ga-re.com](http://www.ga-re.com)

June 2014

### **Goldschmidt & Associates Brokers Sale of 28-40 Westchester Avenue White Plains, New York**



Eric S. Goldschmidt, Senior Partner at Scarsdale New York based Goldschmidt & Associates announced that he brokered the sale of 28-40 Westchester Avenue, White Plains, New York.

The 6,000 SF retail strip center strategically located across from The Westchester, sold near the asking sales price of \$1,525,000. The Seller was PTMCD Management Company of White Plains. The Purchaser was EIGMP Realty, LLC of New Rochelle. Affiliates of EIGMP also own other properties in Westchester County.

The sale came at an opportune time as the immediate area has two major multi-use developments in the planning stage to be built on Westchester Avenue and South Broadway within view of 28-40.

For additional information please contact Mr. Goldschmidt at 914-723-1616 x 11 or [eric@ga-re.com](mailto:eric@ga-re.com).

Goldschmidt & Associates, licensed in New York, Connecticut, and New Jersey, specializes in the sale and leasing of retail, office, industrial, and land properties in the New York metro area.