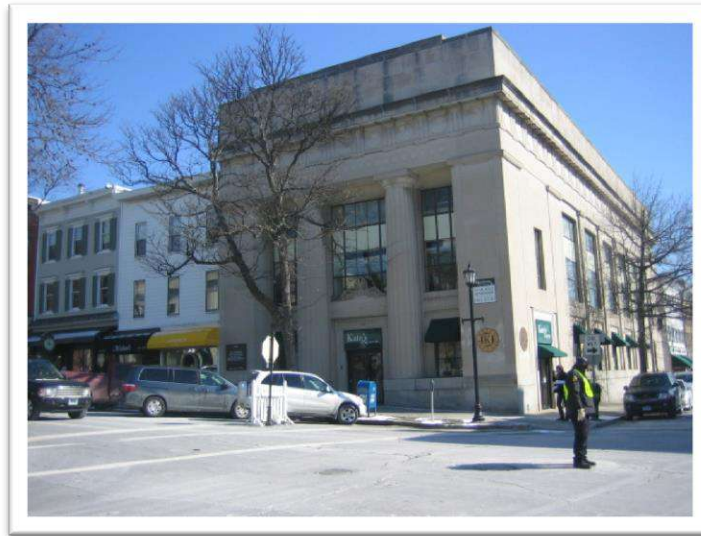


GOLDSCHMIDT & ASSOCIATES
ONE CHASE ROAD • SCARSDALE, NEW YORK 10583 • TEL (914) 723-1616 • FAX (914) 723-7720
www.ga-re.com

August 2014

Goldschmidt & Associates
Co-Brokers 125 Greenwich Avenue, Greenwich CT Lease
to Shreve, Crump & Low of Boston



Pam Bren Goldschmidt, Partner at Scarsdale based Goldschmidt & Associates, announced that it has co-brokered the leasing of 4,800 SF at 125 Greenwich Avenue in Greenwich CT to Shreve, Crump & Low, of Boston, Massachusetts (www.shrevecrumpandlow.com).

Shreve, Crump & Low is America's oldest and finest jeweler, opening in 1796 in Boston. They are known for classic fine jewelry, timepieces, tableware and antiques. Shreve, Crump & Low will be a welcome addition to the world renowned Greenwich retail community.

They are currently located on Newbury Street, Boston and opened their second store at The Mall of Chestnut Ridge in the upscale Chestnut Hill section of Boston.

Mrs. Goldschmidt and Carl Austin, of Austin Corp. Properties, represented the Tenant. Tom Torelli, of Allied Properties, represented the Landlord.

For additional information please contact Pam Bren Goldschmidt at 914-723-1616 x 12 or pam@ga-re.com.

Goldschmidt & Associates, licensed in New York, Connecticut, and New Jersey, specializes in the sale and leasing of retail, office, industrial, and land properties in the New York metro area.