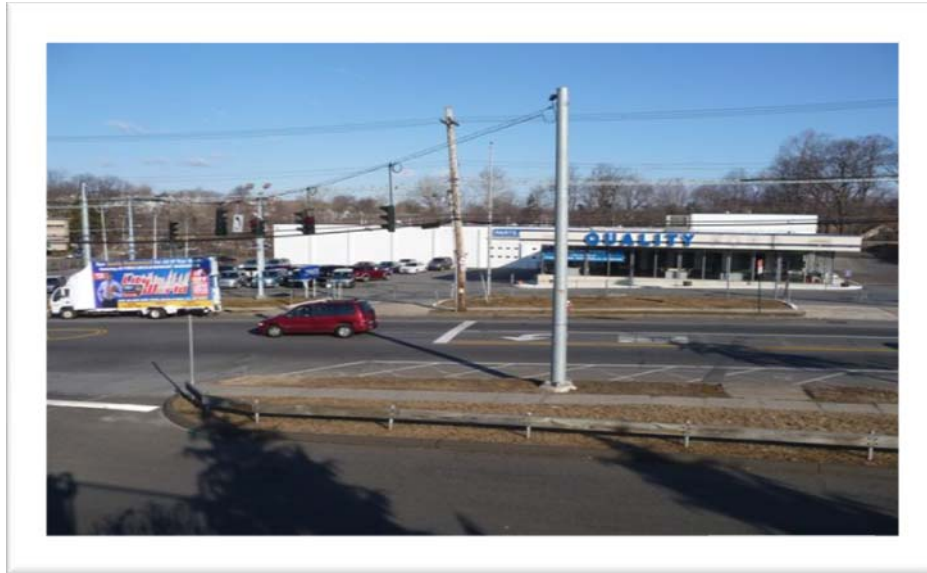


GOLDSCHMIDT & ASSOCIATES

ONE CHASE ROAD • SCARSDALE, NEW YORK 10583 • TEL (914) 723-1616 • FAX (914) 723-7720
www.ga-re.com

August 2011



CVS OPENS TWO NEW STORES AND PURCHASES A NEW DEVELOPMENT SITE IN WESTCHESTER COUNTY, NEW YORK

Eric S. Goldschmidt, Senior Partner at Scarsdale, New York based Goldschmidt & Associates announced that it co-brokered the sale of two properties totaling 2+ acres on the Northeast corner of East Sanford Boulevard and S. Fulton Avenue to CVS/Caremark Corp. for the development of a new free standing CVS store. The Sellers of a vacant piece of land and the former Quality Ford dealership were represented by Everton Lewis of Rio Valley Realty Corporation.

Construction will begin shortly for the new CVS store and a free-standing bank. The name of the bank has not been disclosed at this time.

The purchase comes within a month of CVS' opening of two new stores - at 218-222 North Avenue, New Rochelle and in the Bedford Green Shoprite Shopping Center, Rt 117, Bedford Hills. Mr. Goldschmidt was the sole broker on the New Rochelle transaction and Princeton Realty Group represented the Landlord of the Bedford Hills site.

The new openings and development continues CVS Caremark Corp's expansion plans in the Westchester County area. Westchester residents are finding that CVS has become their "community store" of choice as CVS not only sells health and beauty aids and pharmaceuticals, but hundreds of products ranging from milk, bread, soda, non-perishable groceries, chocolates, greeting cards, toys, hardware, school and office supplies, plus photo developing and countless other items. "CVS has become a virtual one-stop shopping destination for area residents who are seeking an alternative to driving and shopping at out-of-the-way mega stores," Mr. Goldschmidt stated.

For additional information please contact Mr. Goldschmidt at 914-723-1616 ext 11.

Goldschmidt & Associates, just celebrating its 20th anniversary, specializes in the sale and leasing of retail, commercial, and industrial properties in the New York Metropolitan area.